

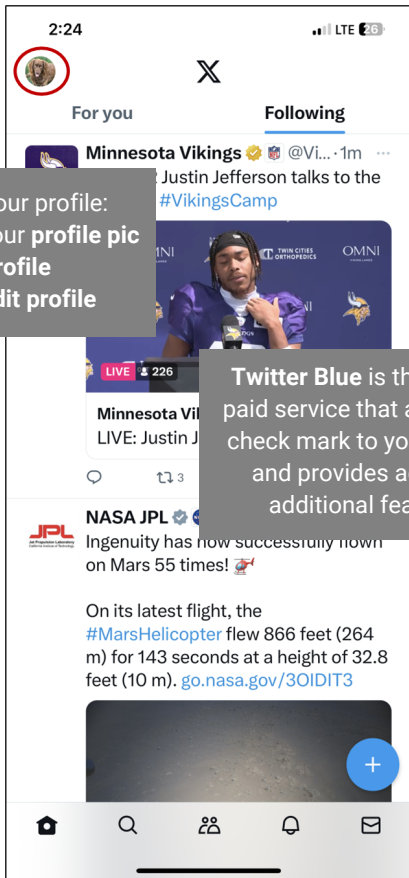


twitter

smart card

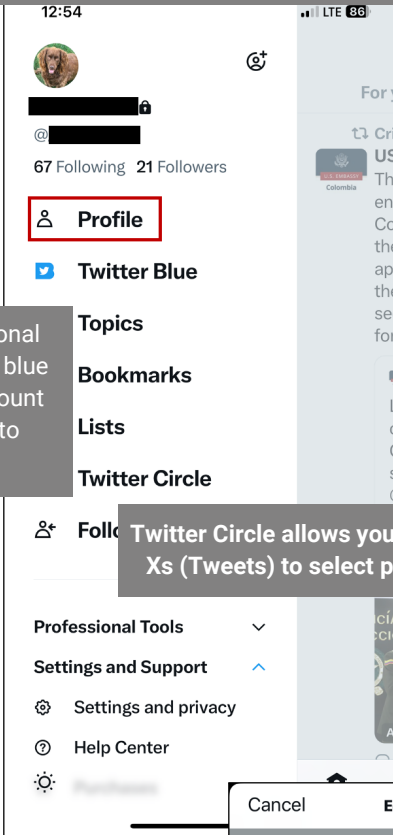
PROFILE SETTINGS

X (formerly known as Twitter) is a platform to communicate and stay connected through the exchange of quick, frequent messages. People post X's (previously known as Tweets), which may contain photos, videos, links, and text. These messages are posted to a user's profile, sent to followers, and are searchable on X search.



To edit your profile:
• touch your **profile pic**
• touch **Profile**
• touch **Edit profile**

Twitter Blue is the optional paid service that adds a blue check mark to your account and provides access to additional features.



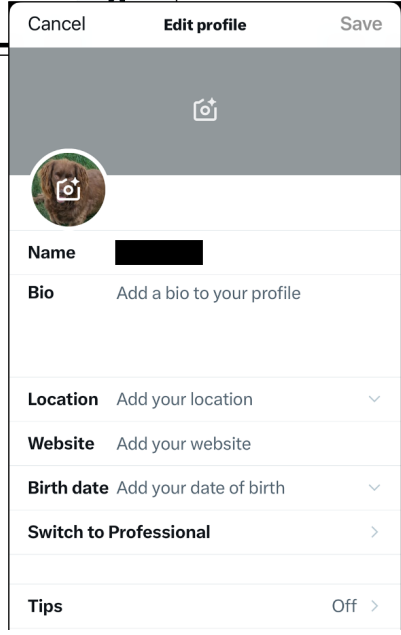
Twitter Circle allows you to send Xs (Tweets) to select people.



Lights, camera ... attachments!
Your photo and video Tweets will show up here.

How To Create a Secure Profile

- do not use a face photo
- use a **general location** (or no location)
- change your X (Twitter) **username** periodically to limit account exposure
- use **nicknames, initials, or pseudonyms**



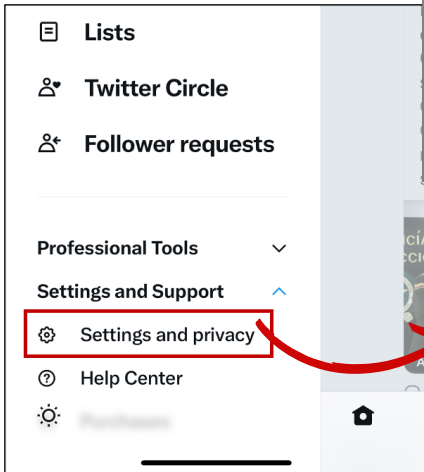


formerly
twitter

smart
card

SECURE YOUR ACCOUNT

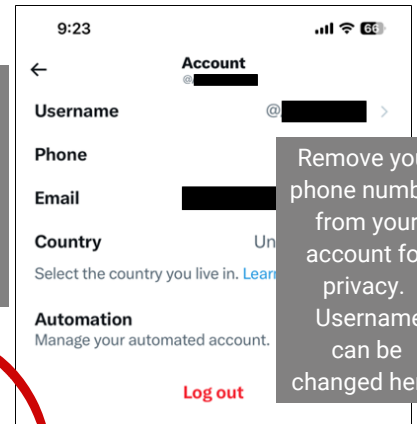
Access the **Settings and privacy** menu from the **Settings and Support** menu. From the **Settings and privacy** menu you can do things like view/change your account information, setup 2-factor authentication, and view your connected apps and session history.



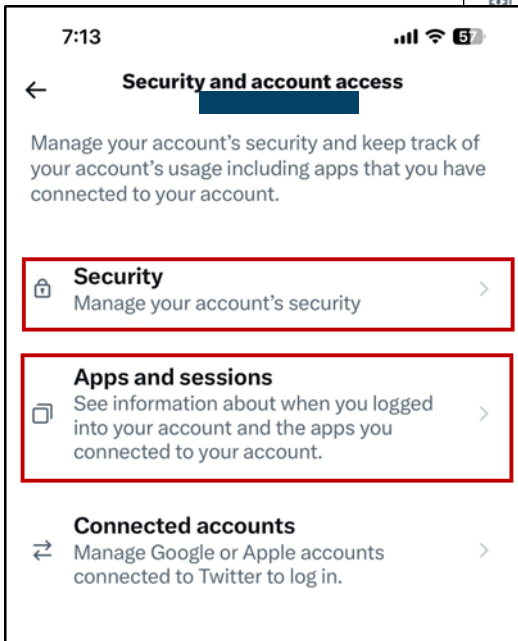
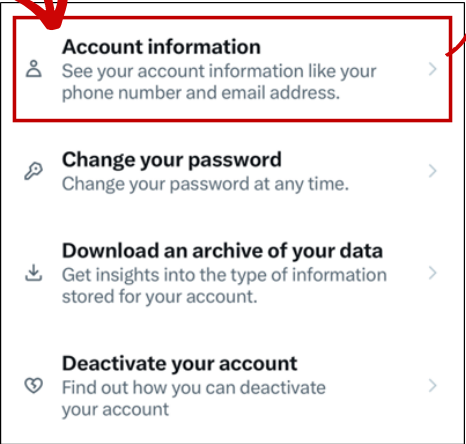
Your account
See information about your account, download an archive of your data, or learn about your account deactivation options.

Security and account access
Manage your account's security and keep track of your account's usage including apps that you have connected to your account.

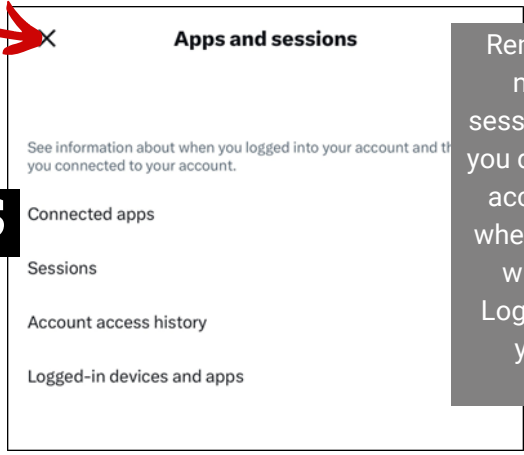
Monetization
See how you can make money on Twitter and manage your monetization options.



Remove your phone number from your account for privacy. Username can be changed here.



Turn on two-factor authentication to prevent unauthorized logins on your account.



Remove any connected apps that do not need to be connected. View sessions on other devices, delete those you don't recognize. View your account access history to see the location of when your account was accessed, this will identify unauthorized access. Logged-in devices and apps are those you've allowed to access your X (Twitter) account.

APPS and SESSIONS

EFFECTIVE: AUGUST 2023



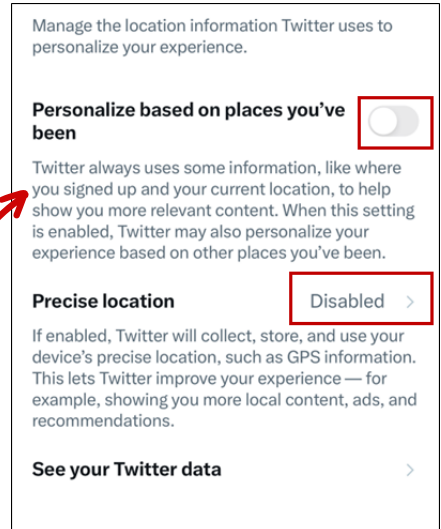
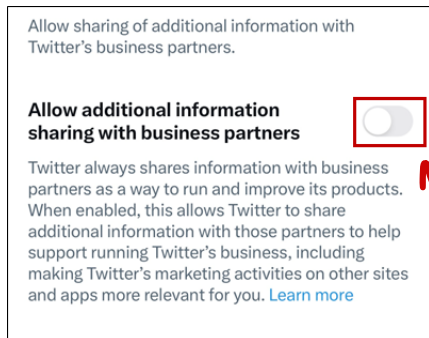
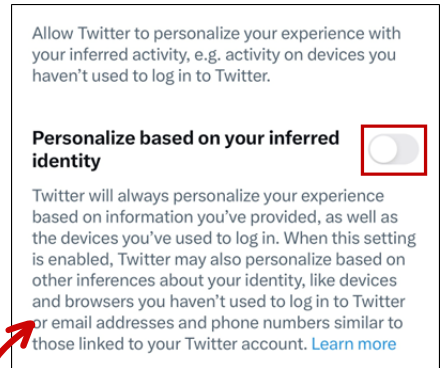
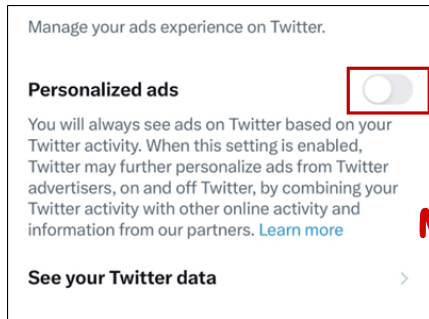
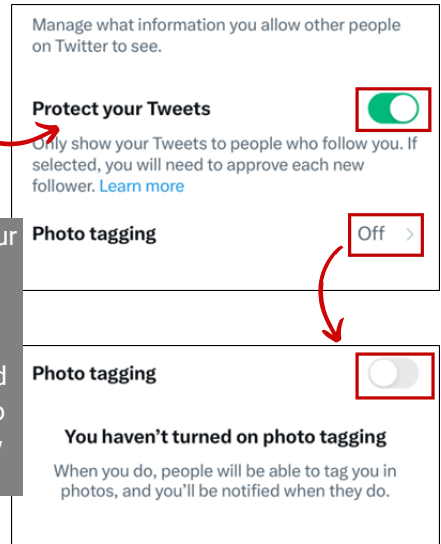
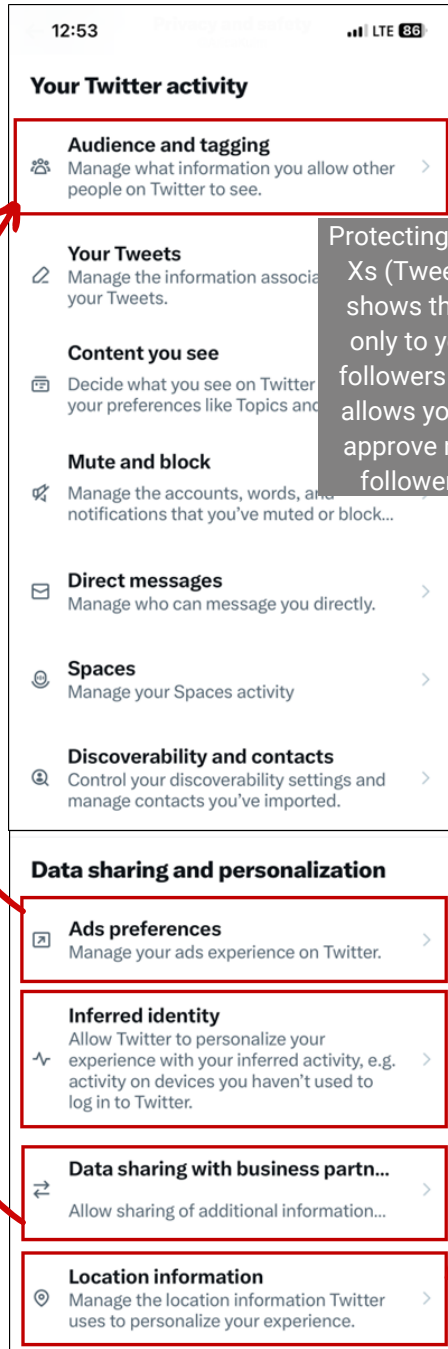
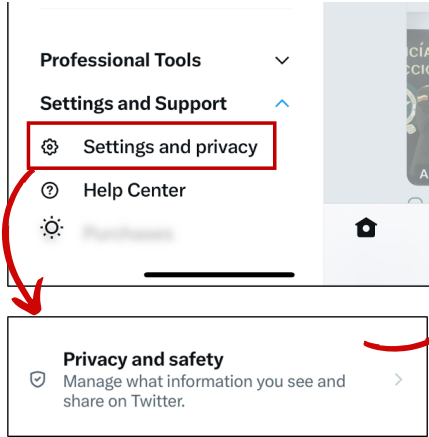


formerly
twitter

smart
card

PRIVACY AND SAFETY

Ensure your privacy and safety by protecting your Xs (Tweets), turning off photo tagging, turning off precise location and not allowing personalized ads or inferred identity.



Disabling or turning off these settings creates a less personal experience, but also limits the information you share with X (Twitter) about your location and activity while using the app.





formerly
twitter

*smart
card*

USEFUL LINKS

Safe Search Kids

<https://www.safesearchkids.com/>

Microsoft Safety & Security

<https://support.microsoft.com/en-us/help/4091455/windows-protect-privacy-internet>

OnGuard Online

<https://www.consumer.ftc.gov/features/feature-0038-onguardonline>

X (Twitter) Privacy

<https://help.twitter.com/en/safety-and-security#ads-and-data-privacy>



<https://consumer.sd.gov/1-800-300-1986>



South Dakota
**CONSUMER
PROTECTION**
OFFICE OF ATTORNEY GENERAL

